



Navigation

_ positioning	3
_ assets	4
_ must try experiences	8
_ practical guide	13
_ accommodation	14
_ f&b	19
_ kids' clubs	24
_ wellness	25
_ sports	30
_ meetings & events	31
_ general map	35
_ FAQ	36



Magna
Marbella

**At the doorstep of Andalusian
cultural and natural wonders,
unwind into a lush oasis
of coolness, protected by the
mountains of Sierra Blanca.**



Club Med back in Spain, 20 years after Don Miguel.

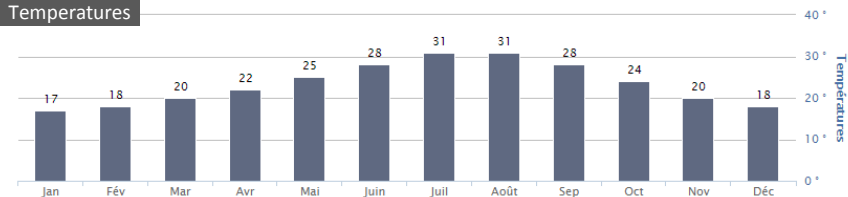
- A brand new 4T Resort within easy reach from all European capitals, ideal to discover the region
- 14 hectares of lush gardens at the foot of Sierra Blanca protective mountains, a great USP vs. competition amidst trendy Marbella

Marbella is a destination easy to reach, ideal all year long thanks to very smooth temperatures.



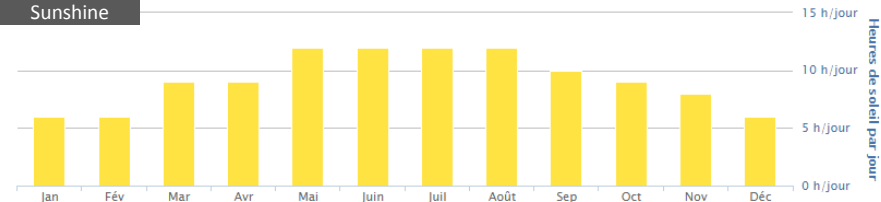
- An average 2,5-hour flight from European capital cities
- 45-minute transfer by bus from Malaga international airport
- No traffic as there are 2 highways following the coast

Temperatures



	janv	fév	mars	avril	mai	juin	juil	août	sept	oct.	nov.	déc.
Température mini	7°	8°	10°	11°	14°	18°	20°	21°	19°	15°	11°	9°
Température maxi	17°	18°	20°	22°	25°	28°	31°	31°	28°	24°	20°	18°
Température mer	16°	16°	16°	17°	18°	20°	23°	24°	23°	21°	18°	17°

Sunshine



Magna Marbella is an ideal destination to circle and discover the wonders of Andalusia



- Rich **cultural** and **architectural** heritage from Arabian-Andalusian influence : Plaza de Europa in Seville • Mosque in Cordoba • Alhambra in Granada
- Dramatic **natural** landscapes : picturesque white villages perched on rocky hills overlooking infinite olive tree plains



Séville



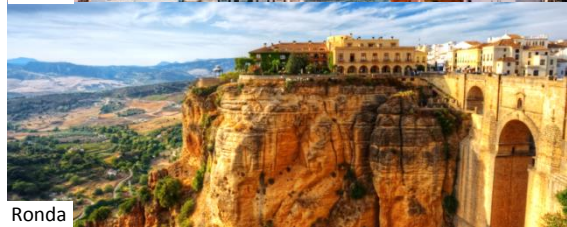
Cordoue



Cadiz



Grenade



Ronda

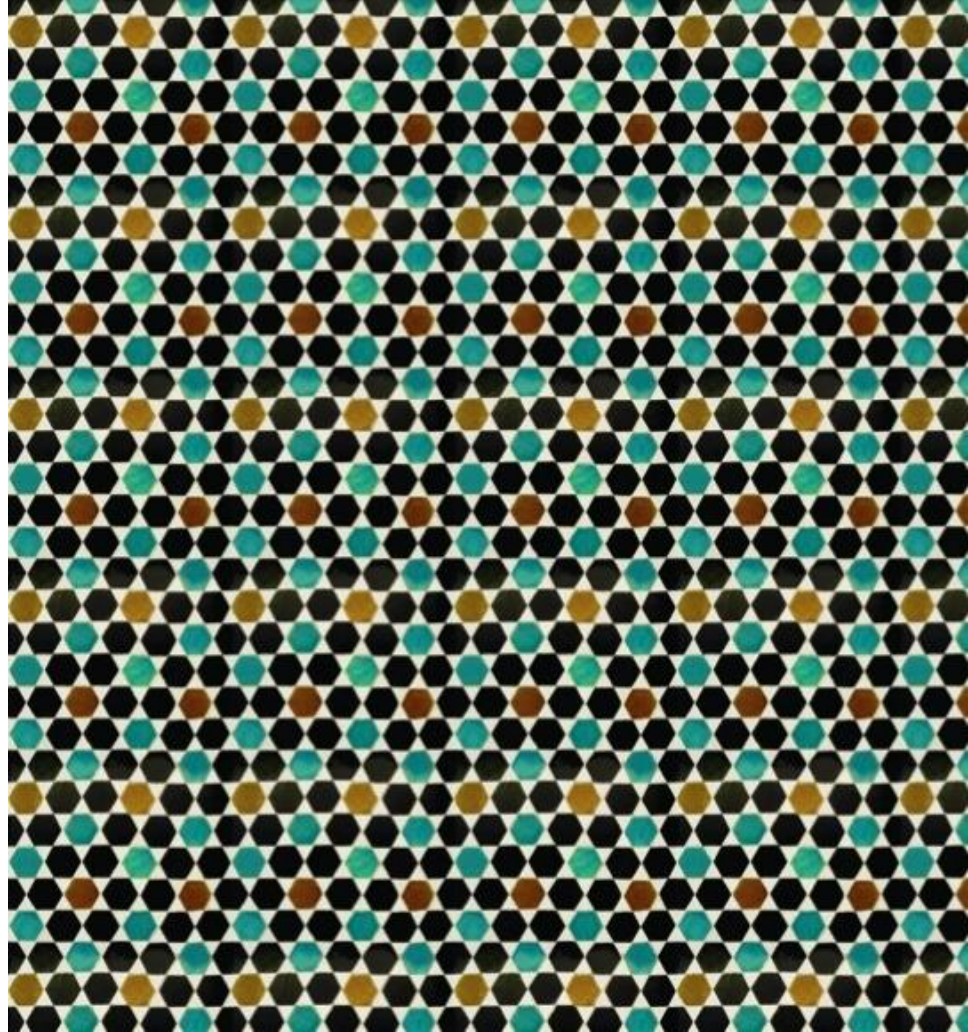


Malaga

“ Mediterranean Pedigree,
Andalusian vibes ”



must-travel
Experiences 





Casco Antiguo Marbella

Close to the Resort, blend into Spanish laidback art-de-vivre. Take a stroll on Plaza de los Naranjos and savor the overwhelming fragrance of orange trees.



Olvera



Ronda

Ruta de los Pueblos blancos

Follow the path of picturesque white villages perched on dramatic cliffs overlooking infinite olive tree plains.

Morning hike in Sierra Blanca mountains

Explore the mountain protecting Magna Marbella as the sun comes up. Infinite variety of wild flowers, olive groves, wild goats, Andalusian nature has plenty to offer.





Caminito del Rey

Via ferrata following an impressive canyon, in the natural park of Los Ardales.



_ practical guide



Magna
Marbella

_ accommodation

SUPERIOR ROOMS

_ C2 | C2+ | B2 : 27sqm + 7sqm balcony
[separated bathroom with shower, 2
sinks, separate toilet]

_ C3 : 40sqm + 11sqm balcony
[+ a sofa turning into a 3rd bed,
separated by an isolating curtain)

All **SUPERIOR** have air con, safety
vault, ironing gear, 40' TV, tea-coffee kit

DELUXE ROOMS

_ A2 : 40sqm + 11sqm balcony
[+ a dressing and furnished living room
area + turndown service]

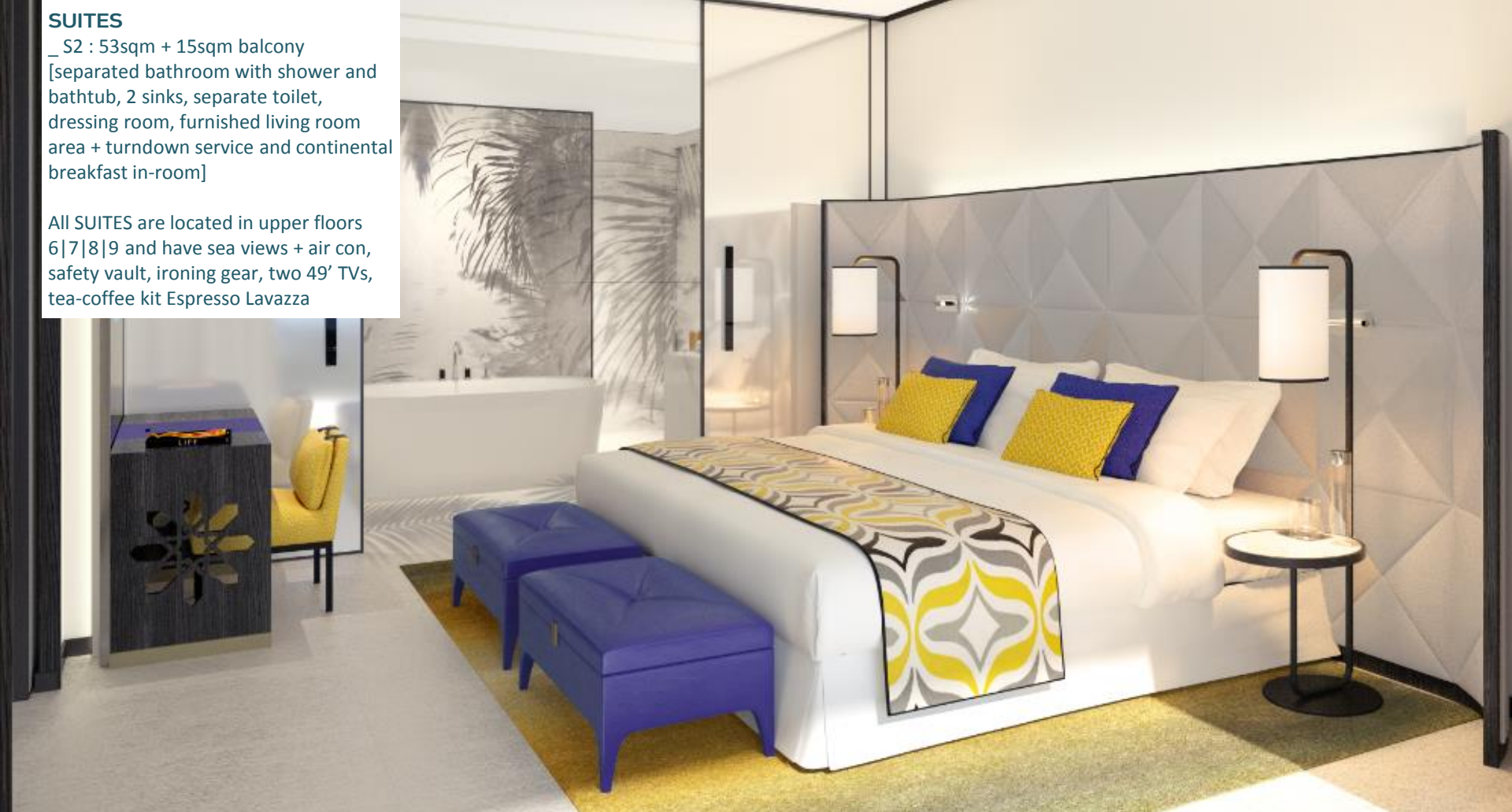
All **DELUXE** have sea views and are
located in floors 3|4|5 + air con, safety
vault, ironing gear, 40' TV, tea-coffee kit



SUITES

_ S2 : 53sqm + 15sqm balcony
[separated bathroom with shower and bathtub, 2 sinks, separate toilet, dressing room, furnished living room area + turndown service and continental breakfast in-room]

All SUITES are located in upper floors 6|7|8|9 and have sea views + air con, safety vault, ironing gear, two 49' TVs, tea-coffee kit Espresso Lavazza





Accommodation	Name tag	Capa E19 Season Opening	
		03Aug-13Sep 2019	14Sep-20Dec 2019
S2	Suite	0	0
S2+B2	Suite Interconnecting with Superior Room Sea View Horizon	15	20
A2	Deluxe	8	11
A2+C2+	Deluxe Interconnecting with Superior Room Sea View	8	11
B2	Superior Room Sea View Horizon	12	16
B2+B2	Interconnecting Superior Room Sea View Horizon	3	4
C2+	Superior Room Sea View	1	3
C2+C2+	Interconnecting Superior Room Sea View	4	8
C2	Superior Room	2	5
C2+C2	Interconnecting Superior Room	37	85
C3	Family Superior Room	15	28
C2+C3	Superior Room Interconnecting with Family Superior Room	10	24
H2	PRM Room	0	0
C2+H2	Superior Room Interconnecting with PRM Room	2	3
Total put on sales		196	373



Magna
Marbella

_ f&b

Main Restaurant • Buffet

1 buffet area + 3 rooms + 1 terrace :

- _ Salle 1 | Picasso and street art theme
- _ Salle 2 | flamenco theme
- _ Salle 3 | equestrian theme

Total 1 022 pax

_ indoor 756 pax

_ outdoor terrace 266 pax

International cuisine and Andalusian specialties



Gourmet Lounge

Changing atmosphere throughout the day
to provide All Day Dining Signature...

Late breakfast • Lunch • Late lunch • Happytiser
• Dinner • After dinner

... organized around 3 areas :

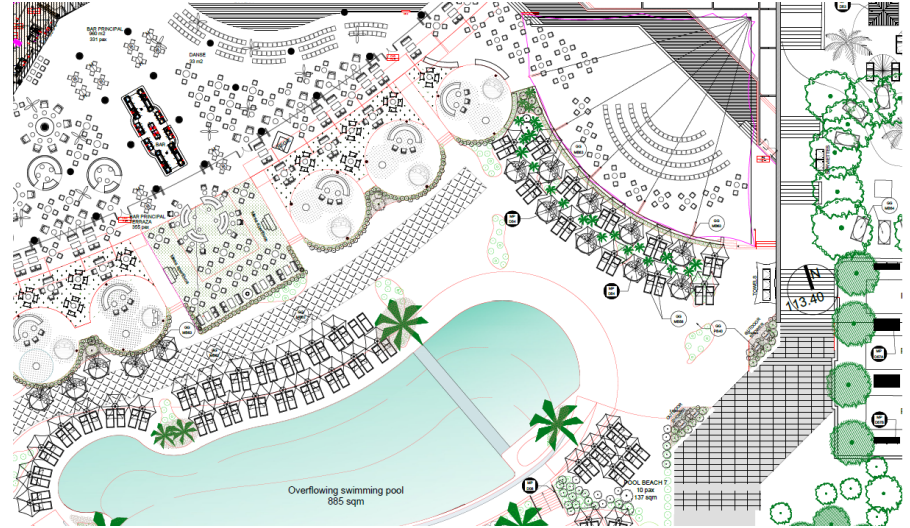
- _ Wine Cellar and Delicatessen
- _ Lounge bar
- _ Restaurant area

Total 240 pax (120 pax for dinner served at the
table with a special menu – *NB : not signed after
a Chef's name*)

Local products and Andalusian specialties

Muted and warm atmosphere with a golden and
tender green design, inspired from Ubeda region at
the north of Andalusia and the olive tree plains.





Main Bar

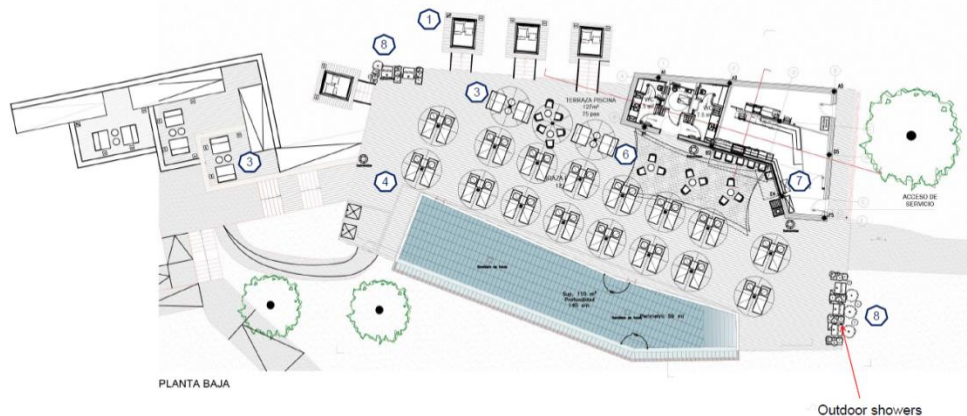
Indoor / outdoor, completely open on the outside and the main lagoon pool, it has been thought as a main square, the place to meet.



Zen pool bar

Open on the infinity Zen pool, tucked into surrounding pine tree forest, the place to unwind in a blissful atmosphere.

Fresh and detox juices served all day.





Magna
Marbella



_ kids' clubs

The full range of kids' clubs :

_ **Baby Club Med**® 30 pax • Migratory birds patterns, a warm and comforting atmosphere for the little ones with starring pink flamingos

_ **Petit Club Med**® 40 pax • Local fauna, starring bulls, wild horses and one protected species, the lynx, gathered around an impressive tree-shaped sculpture

_ **Mini Club Med**® 200 pax (max capacity during school holidays) • Indoor garden design reinterpreting the codes of Andalusia with flamenco, guitar, El Quijote, Picasso

_ **Club Med Passworld**® 100 pax (max capacity during school holidays) • Upon the theme of Spanish ferias



Magna
Marbella

_ wellness

Main Pool

Designed with a beach club spirit, the lagoon infinity pool is overlooking Marbella, the Mediterranean sea. On a clear weather, you can see Gibraltar rock and Moroccan coasts. Alcoves are tucked into the foliage for families, couples and friends to reconnect

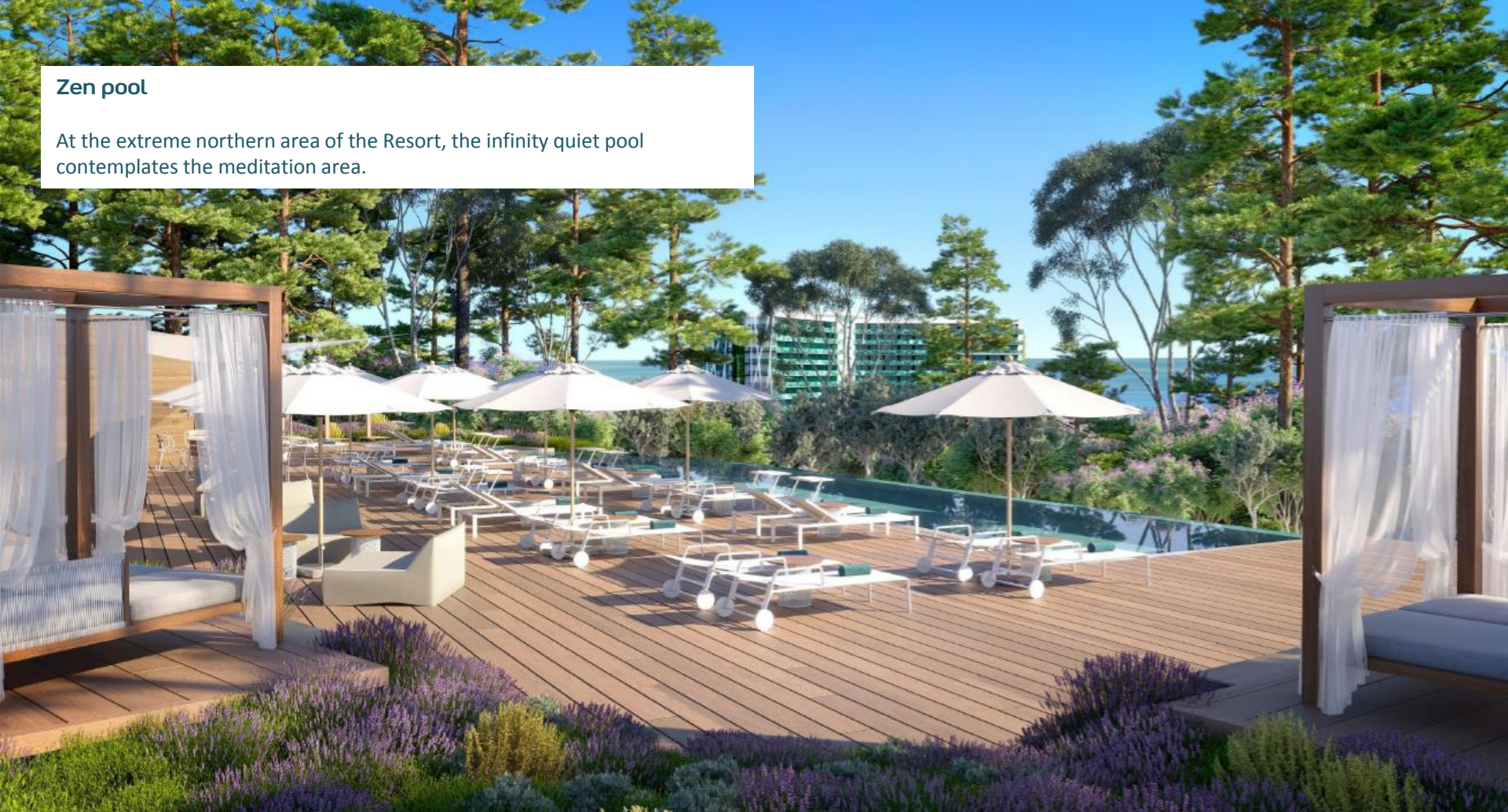
_ 900sqm

_ 30% heated all year long



Zen pool

At the extreme northern area of the Resort, the infinity quiet pool contemplates the meditation area.





Club Med Spa by CINQ MONDES

- _ 700sqm
- _ 14 treatment cabins with 1 duo cabin
- _ 1 hairstyling salon
- _ 1 indoor | outdoor relaxation area
- _ 1 dedicated hammam
- _ **1 indoor | outdoor pool open to all GMs**



+ Gym facilities

- _ 1 room for cardio training
- _ 1 room for fitness cross training
- _ 1 outdoor terrace (outdoor lessons)





Magna
Marbella

_ sports

Wide range of land sport

_ **Tennis, Circus, Fitness** Academies | ALL LEVELS

_ **Padel Tennis, Archery** Academies | BEGINNERS

_ **Beach volley, Calcetto, Basket ball, Table tennis, Pétanque** | FREE ACCESS

_ **Golf *wip*** | CONCIERGERIE

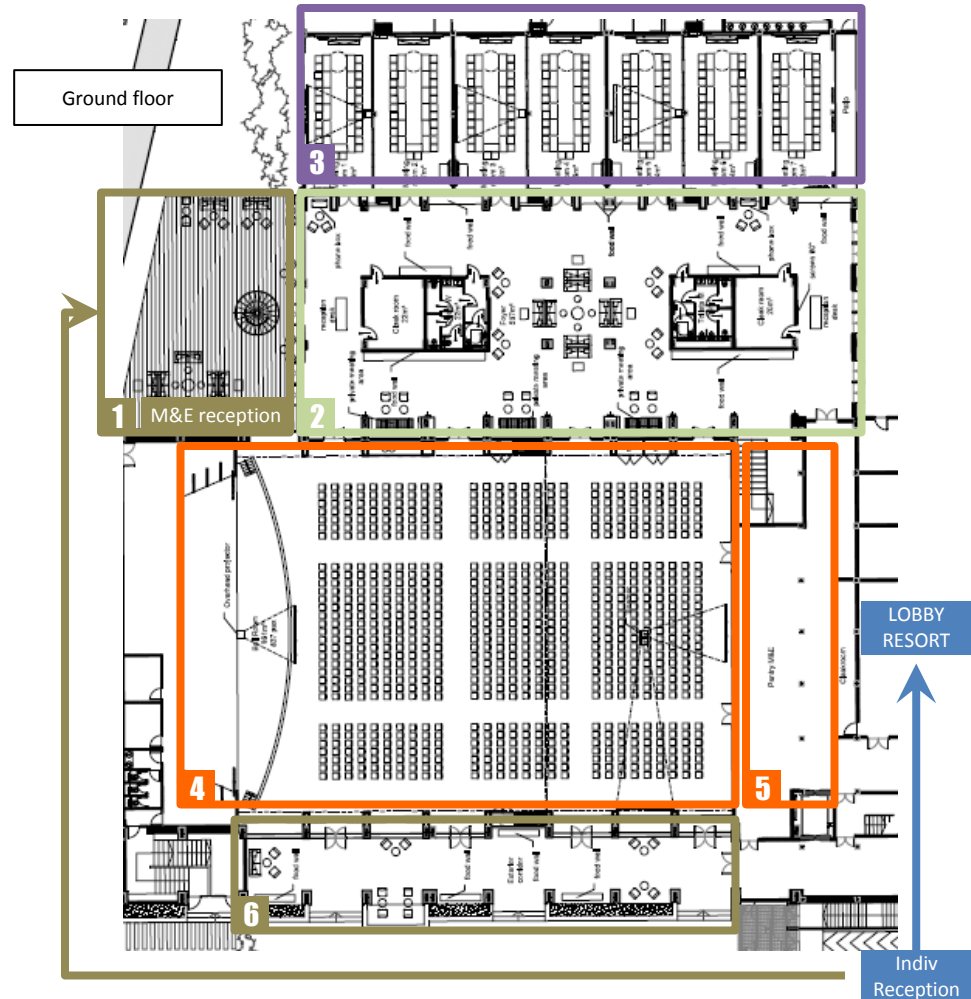


**Magna
Marbella**

_ meetings & events

Meetings & Events by Club Med

- 1** 1 outdoor terrace 240sqm | Capa 225 pax
Dedicated reception | check in for groups
- 2** 1 multimodal hub 587sqm | Capa 400 pax
 - _ Lounge for breaks (coffee, tea, cocktails, etc)
 - _ For more informal 1*1
 - _ 4 dynamic screens
 - _ 2 reception counters
 - _ 2 cloakrooms
- 3** 7 interconnecting meeting rooms
- 4** 1 plenary room 931sqm | Capa 837 pax
- 5** 1 pantry 193sqm (for catering and receptions)
- 6** 1 outdoor plenary terrace 190sqm | Capa 200 pax







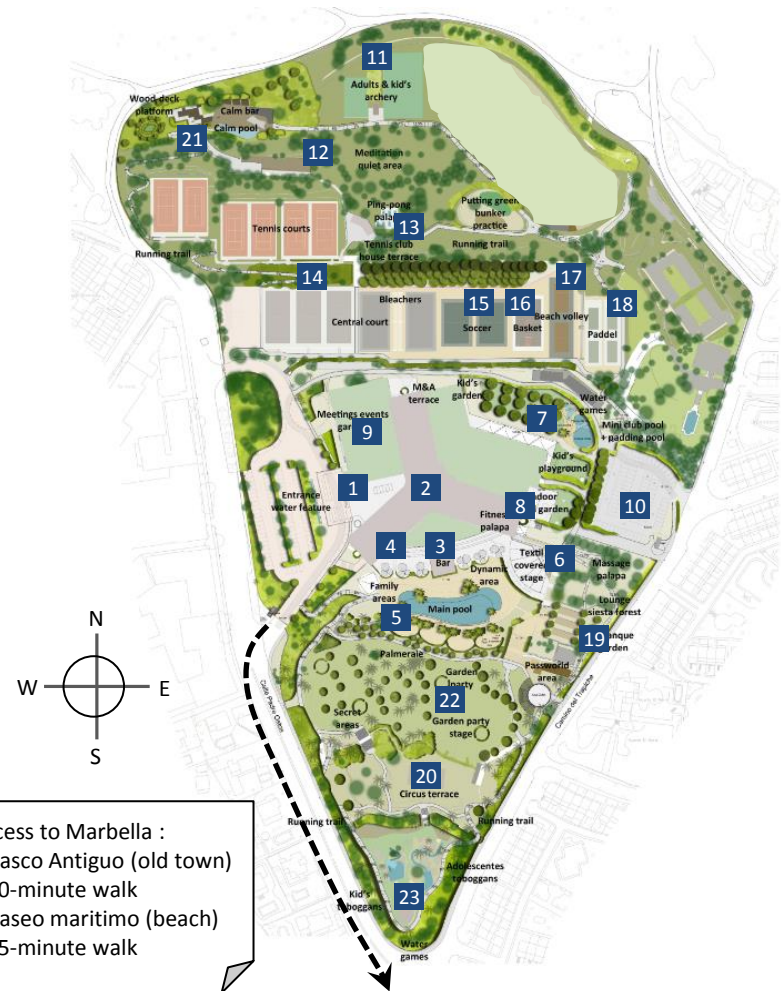
Club Med
Ψ



- HEART OF THE RESORT
 - 1_ Lobby and reception
 - 2_ Main building | Rooms
 - 3_ Main bar
- 4_ Main restaurant + Gourmet Lounge
- 5_ Main pool
- 6_ Semi-open theatre
- 7_ Kids' clubs
- 8_ Spa & indoor | outdoor pool
- 9_ Meetings & Events
- 10_ Parking (151 lots)

- SPORTS
 - 11_ Archery
 - 12_ Meditation area | Yoga
 - 13_ Table tennis palapa
 - 14_ Tennis courts (11)
 - 15_ Calceotto courts (2)
 - 16_ Basketball field (1)
 - 17_ Beach volley fields (2)
 - 18_ Padel tennis courts (4)
 - 19_ Pétanque lanes (5)
 - 20_ Circus | flying trapeze

- ZONING
 - 21_ Zen zone
 - 22_ Garden party
 - 23_ Family pool section



FAQ

- The building looks massive doesn't it?

It is only 9-floors. And the whole field is built upon terrace gardens going down progressively from north to south, so the impression completely goes away when you're in the gardens. The building really fits into the environment, and the architect's intention was to have it completely covered with vegetation and a light and elegant white structure.

- Will you put shuttles towards the city and the beach?

No, the city center is located close to the Resort, it is a 20-minute walk to reach Casco Antiguo, Marbella old town, and 25-minute walk to reach Paseo Maritimo, the beach promenade.

- Will our GMs can access the beach and will you issue a partnership with a local beachclub?

No. The beach is not the greatest asset of Marbella. This is why we chose to position ourselves at the foot of Sierra Blanca mountains, with huge lush gardens providing a secluded retreat and 5 pools (Zen, kids', main, indoor|outdoor, families') a unique asset vs. competition. If customers are looking for a beach experience, we have plenty of other Resorts to send them to (Gregolimano, Palmiye, Da Balaia).

- How about golf?

Marbella is a major golf destination, and it's a key lever to recruit new GMs, especially during shoulder season. With no less than 20 18-hole courses located within 15km, we will develop a Golf Conciergerie, like in Da Balaia.

- Why is the indoor pool open to everyone (and kids) as it is located into the wellness hub?

Magna Marbella will be open 300-days per year, we need to make sure we offer the maximum range of facilities for our GMs, including families if we want to attract them outside high season periods. But for sure families will prefer the main lagoon pool (heated 30% all year) or the family water park with slides.

- When does it open?

First GMs will step in on Aug 03rd, 2019. During the first 6 weeks, only 200 rooms (out of 373 tot) will be sold (no quotas between countries). The Resort will be finished, we just want to make sure teams on-site learn to run it easily. It is not a soft opening, as prices stand still. This opening has to be valued to customers, they will discover a brand new Resort, with the greatest of care.

- How about 'Horizon' label in room reclass?

We added this label to the Superior Rooms that have clearer views with perspectives, located on the upper floors. They're B2 code.

- How about prices?

Week	\$19 FEAM VV Price
03/08/2019	2 380 €
10/08/2019	2 260 €
17/08/2019	2 100 €
24/08/2019	1 900 €
31/08/2019	1 360 €
07/09/2019	1 360 €
14/09/2019	1 360 €
21/09/2019	1 150 €
28/09/2019	1 150 €
05/10/2019	1 150 €
12/10/2019	1 150 €
19/10/2019	1 360 €
26/10/2019	1 270 €
02/11/2019	1 130 €
09/11/2019	1 130 €
16/11/2019	1 130 €
23/11/2019	1 130 €
30/11/2019	1 130 €
07/12/2019	1 130 €
14/12/2019	1 130 €



Coming soon

- _ Product video
- _ Golf Conciergerie
- _ Excursion offer & Conciergerie
- _ Family pool



Magna
Marbella